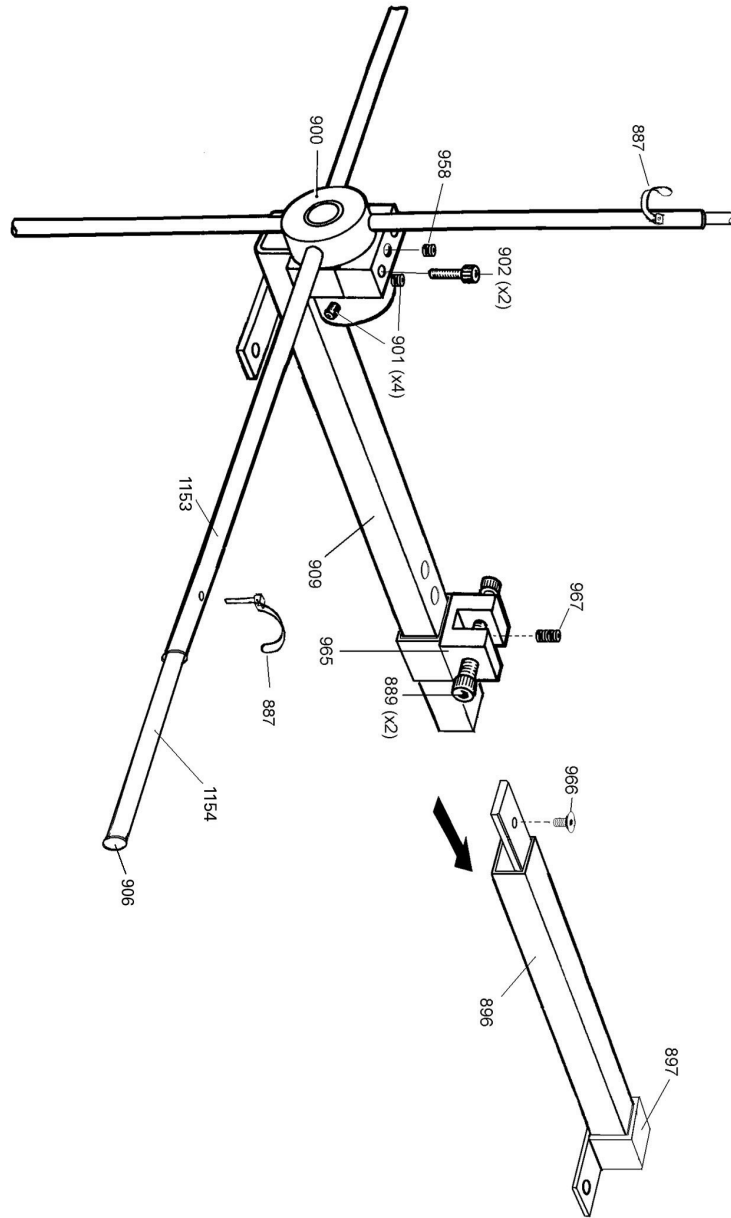


MODIFICATIONS

NOT TO SCALE



J & C R WOOD  
HULL ENGLAND

Part No. 009

XL TWISTER

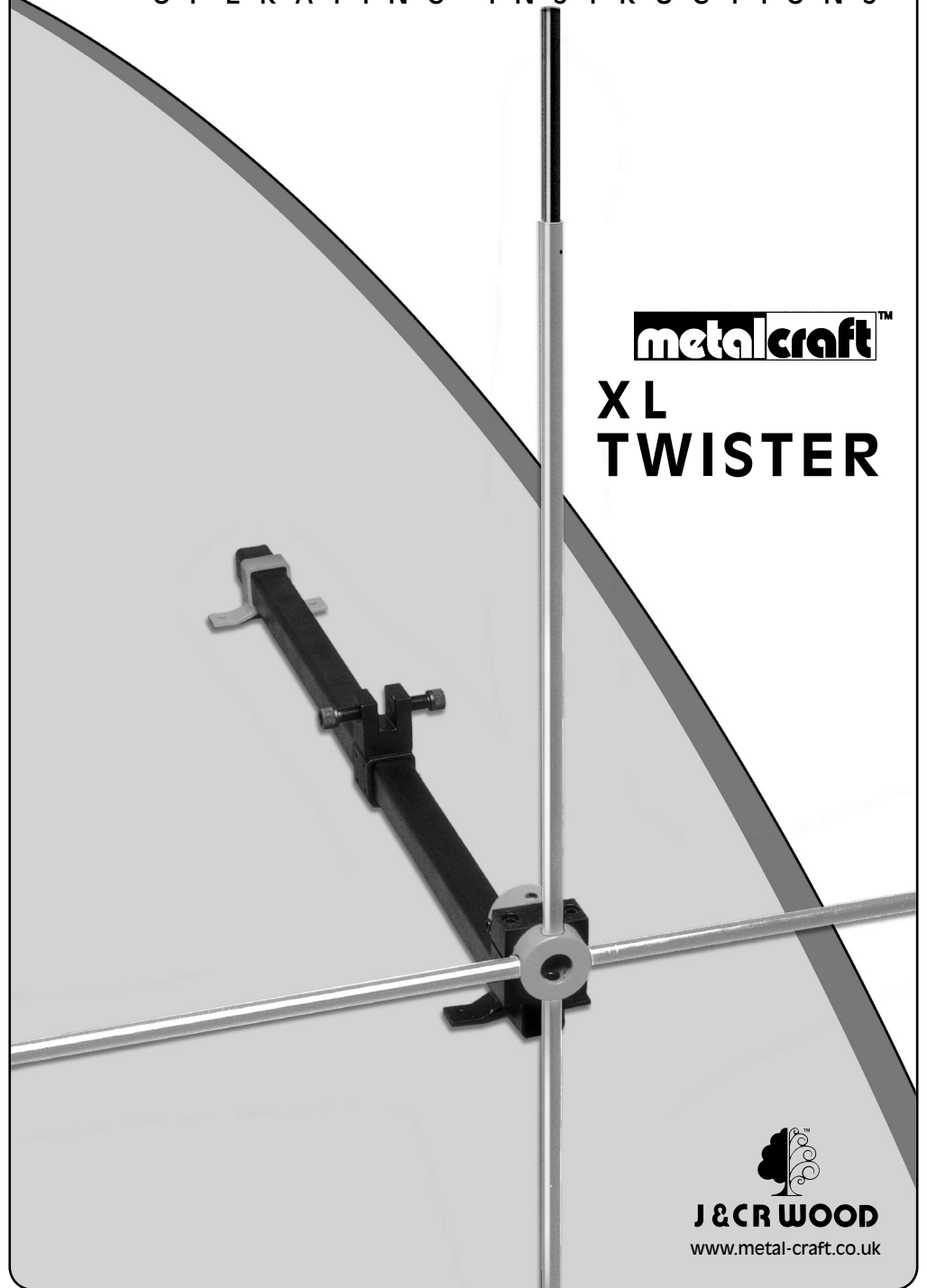
Version No.4

DTP: SP0XLTWISTER.PPP

DATE: 08/06

OPERATING INSTRUCTIONS

metalcraft™  
XL  
TWISTER



J & C R WOOD  
www.metal-craft.co.uk



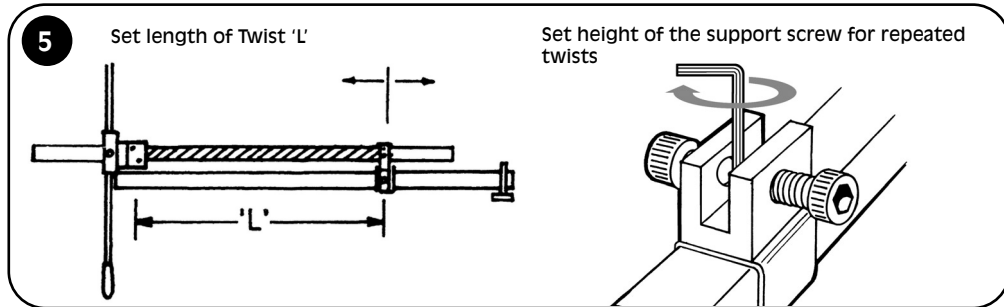
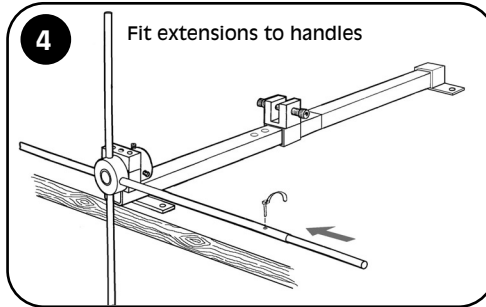
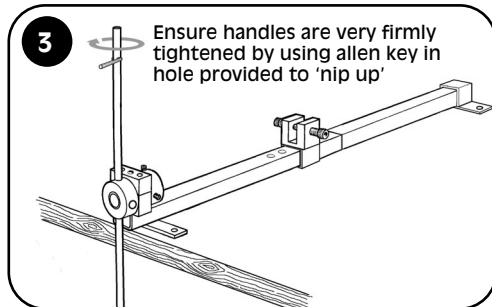
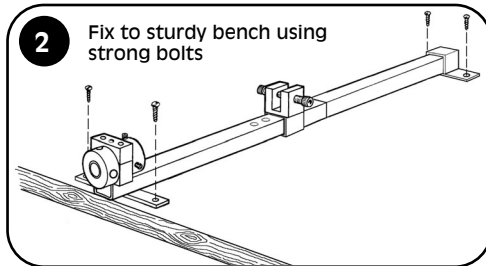
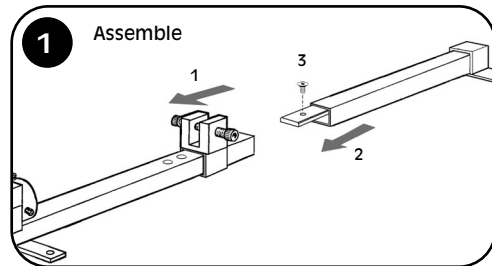
66 CLOUGH ROAD, HULL HU5 1SR • TEL: 01482 345067 • FAX: 01482 441141  
email: info@jandcrwood.co.uk • www.metal-craft.co.uk

Issue 1  
19/05/06

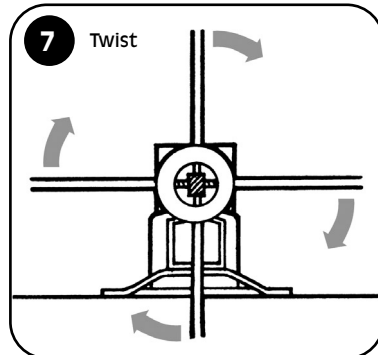
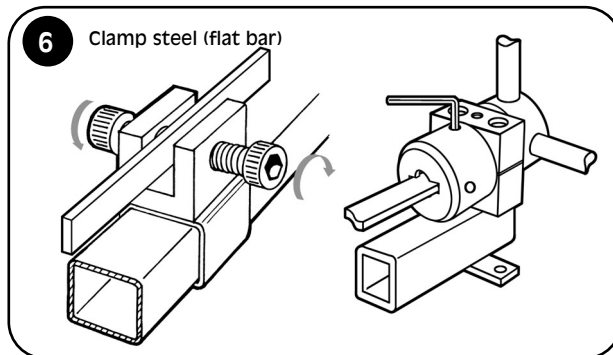
# XL TWISTER

Please keep these instructions in a safe place for any future reference to the parts diagrams.

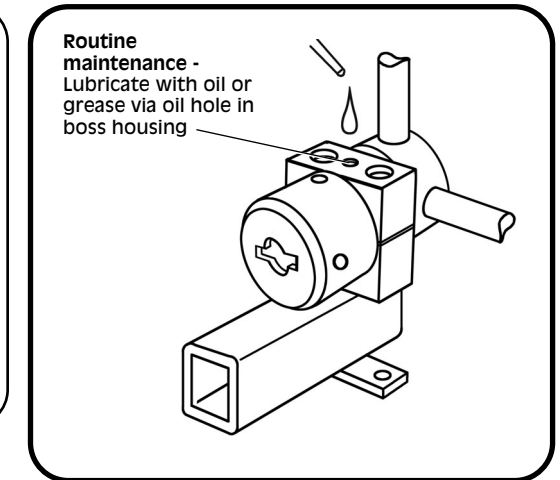
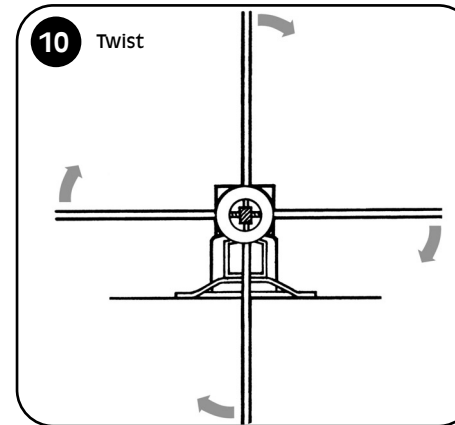
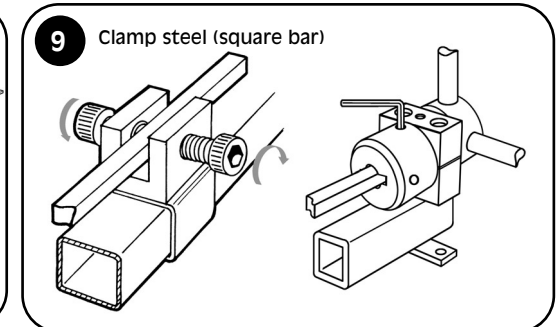
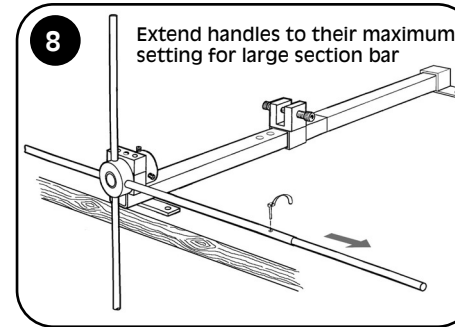
**IMPORTANT** - Ensure all moving parts are regularly lubricated and all bolts kept tightened.



## Twisting Flat Bar



## Twisting Square Bar



## CAPACITIES

MAX. SIZE METAL		LENGTH	
MIN.	MAX.	MIN.	MAX.
40mm x 8mm	16mm x 16mm	60mm	1070mm

**NOTE:**

1) These sizes are for Hot Rolled Black Mild Steel Bar & Annealed Bright Mild Steel Bar.

2) Working beyond the capacities stated above or with materials of greater strength or hardness will reduce the operational life of the machine.

DUE TO A POLICY OF CONTINUAL DEVELOPMENT & IMPROVEMENT THE COMPANY RESERVE THE RIGHT TO MODIFY METALCRAFT TOOLS WITHOUT PRIOR NOTIFICATION.