

MODIFICATIONS		NOT TO SCALE	
P/N 310 Becomes P/N 628 in Boss	4/96		
New version 1.1. Split body with fixed feet.	01/02		
			<b>PRACTICAL TWISTER</b> Part No.28 Version No.1.1
		REF: TRIMPTV11/93 DTP: SPDPMTD.PPP	DATE: 11/93
		<b>J &amp; C R WOOD</b> HULL, ENGLAND	



**J & C R WOOD**

66 CLOUGH ROAD, HULL HU5 1SR • TEL: 01482 345067 • FAX: 01482 441141  
email: info@jandcrwood.co.uk • www.metal-craft.co.uk

Issue 1  
19/05/06



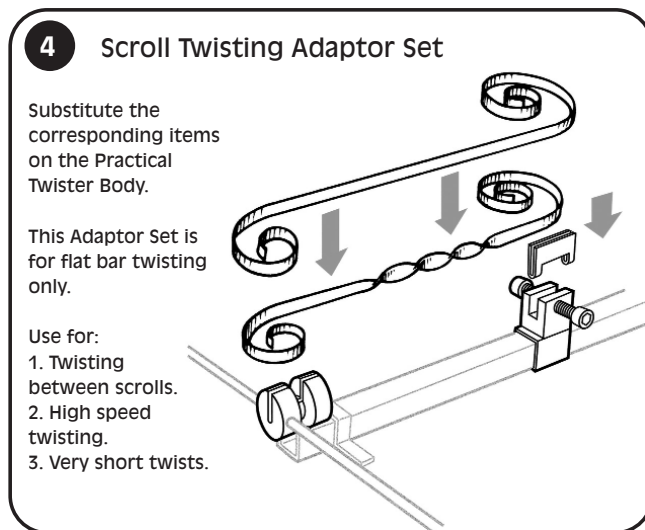
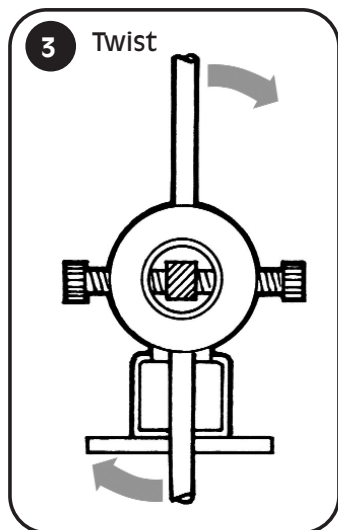
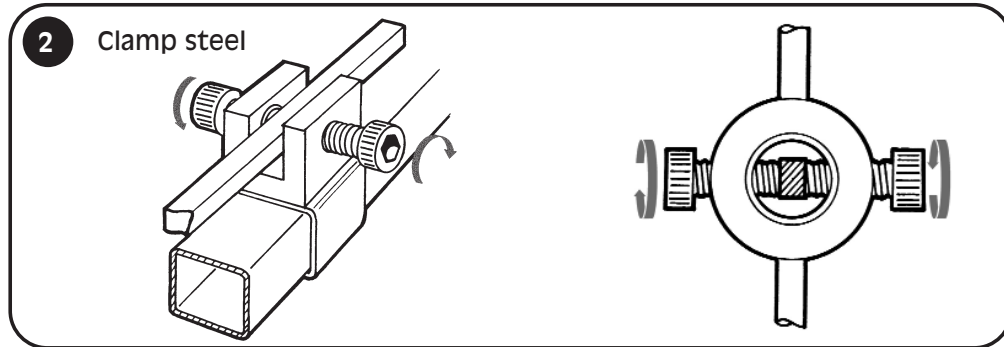
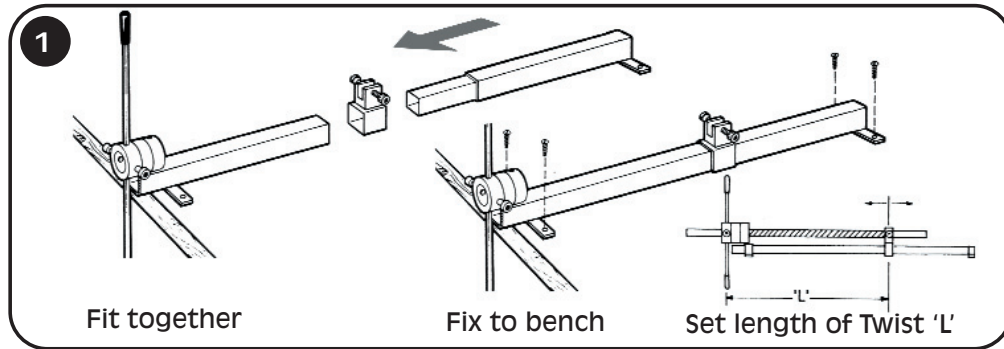
**J & C R WOOD**

www.metal-craft.co.uk



# PRACTICAL TWISTER

Please keep these instructions in a safe place for any future reference to the parts diagrams.

**IMPORTANT** - Ensure all moving parts are regularly lubricated and all bolts kept tightened.



## CAPACITIES

	MAX. SIZE METAL		LENGTH	
			MIN.	MAX.
PRACTICAL	20mm x 3mm	10mm x 10mm	80mm	980mm
PRACTICAL WITH ADAPTOR SET	20mm x 3mm	—	25mm	940mm

**NOTE:**

1) These sizes are for Hot Rolled Black Mild Steel Bar & Annealed Bright Mild Steel Bar.

2) Working beyond the capacities stated above or with materials of greater strength or hardness will reduce the operational life of the machine.

DUE TO A POLICY OF CONTINUAL DEVELOPMENT & IMPROVEMENT THE COMPANY RESERVE THE RIGHT TO MODIFY METALCRAFT TOOLS WITHOUT PRIOR NOTIFICATION.