

**J & C R WOOD**  
HULL, ENGLAND

**MASTER PUNCH & SHEAR TOOL**, Part No.15) & **MASTER PUNCH & SHEAR TOOL**, c/w Measuring Device (Part No.15X) Version 2

REF: TRMPSA12/97  
DTP: SPDMPSBME.PPP  
DATE: 03/06

**J & C R WOOD**

66 CLOUGH ROAD, HULL HU5 1SR • TEL: 01482 345067 • FAX: 01482 441141  
email: info@jandcrwood.co.uk • www.metal-craft.co.uk

Issue No. 1  
29/06/06

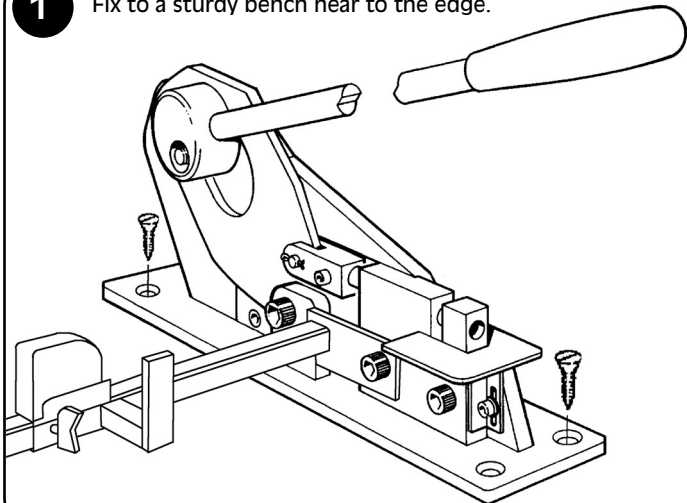


# MASTER PUNCH+SHEAR

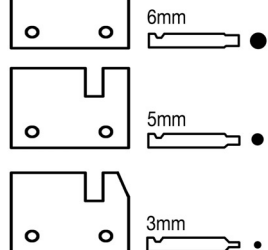
Please keep these instructions in a safe place for any future reference to the parts diagrams.

**IMPORTANT** - Ensure all moving parts are regularly lubricated and all bolts kept tightened.

**1** Fix to a sturdy bench near to the edge.



**2**



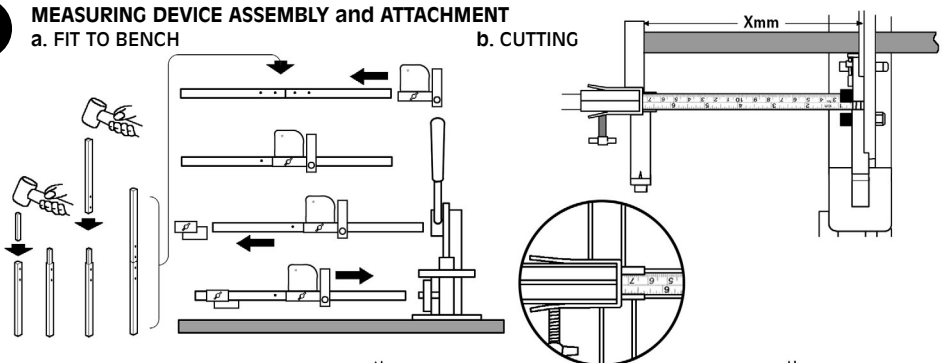
Version MC015 supplied & fitted with 5mm (3/16") block & pin only

Version MC015X supplied with 3mm (1/8"), 5mm (3/16") & 6mm (1/4") blocks & pins with 5mm block & pin factory fitted.

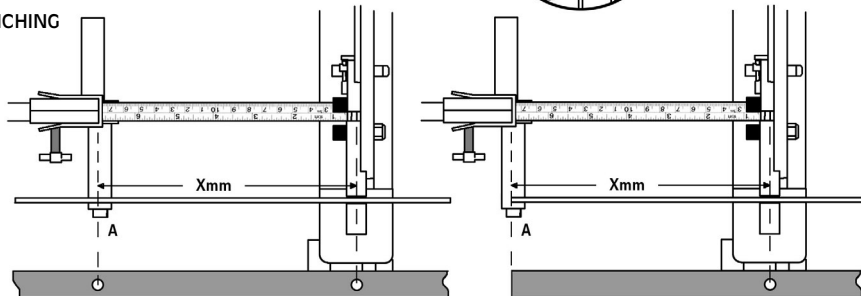
**3** MEASURING DEVICE ASSEMBLY and ATTACHMENT

a. FIT TO BENCH

b. CUTTING



c. PUNCHING

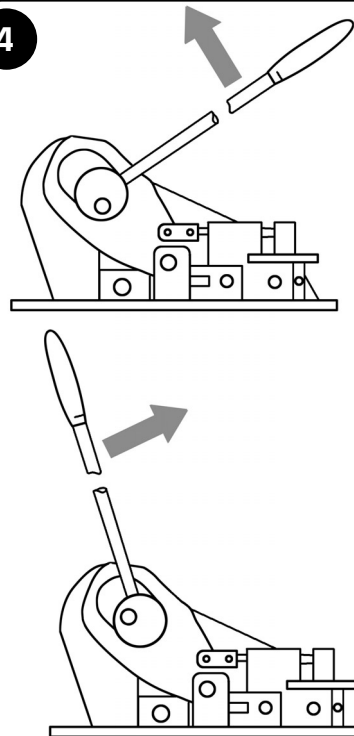


CENTRE TO CENTRE

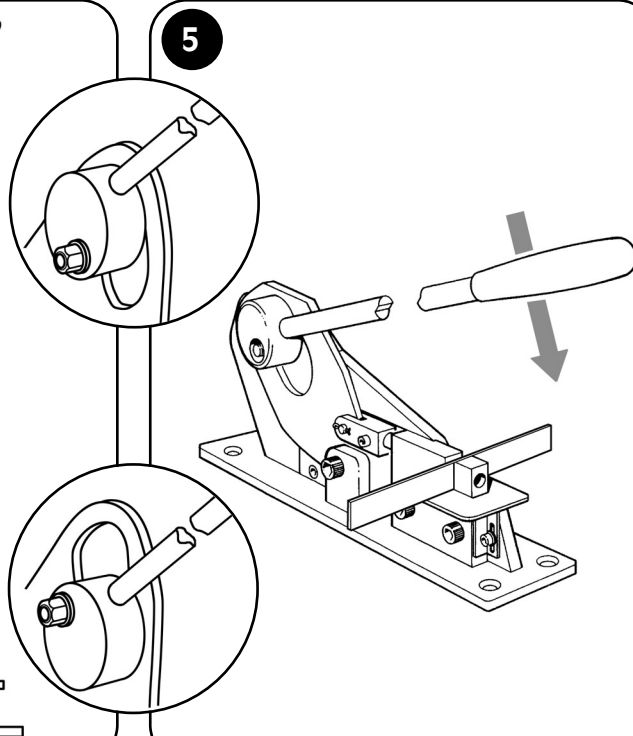
EDGE TO CENTRE

Before using measuring device for punching, please ensure pointer 'A' is set correctly and make a minor adjustment if necessary.

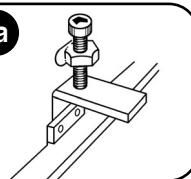
**4**



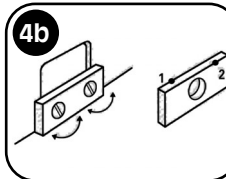
**5**



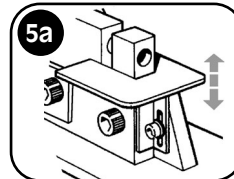
**4a**



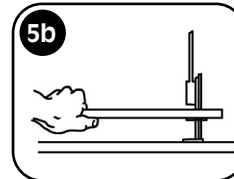
**4b**



**5a**



**5b**



**4** CUTTING

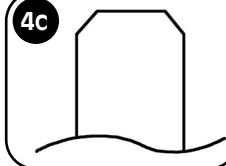
The cam action can be reversed by fitting the handle to the other side of the cam.

4a) Adjusting screw to keep the metal bar level when cutting.

4b) The bottom small blade is reversible having two cutting edges. Also note the two adjusting screws to maintain quality of cut.

4c) Crop corners of metal bar for a professional finish when producing decorative wrought ironwork.

**4c**



**5** PUNCHING

Mark the edge of the metal bar where the hole is to be punched. Place the metal bar so that the mark is in the centre of the slot then pull the handle to punch the hole.

5a) Adjustable platform for setting the distances between the hole centre and the edge of the bar.

5b) It is important to support the metal bar because the large leverage force can break the punch when retracting.

## CAPACITIES

OPERATION	●	■	▬
CUT	6mm	6mm	25mm x 5mm
PUNCH	INTERCHANGEABLE PUNCH BLOCKS & PINS 3mm dia - up to 3mm thick 5mm dia - up to 5mm thick (factory fitted) 6mm dia - up to 3mm thick		

## NOTE:

1) These sizes are for Hot Rolled Black Mild Steel Bar & Annealed Bright Mild Steel Bar.

2) Working beyond the capacities stated above or with materials of greater strength or hardness will reduce the operational life of the machine.

DUE TO A POLICY OF CONTINUAL DEVELOPMENT & IMPROVEMENT THE COMPANY RESERVE THE RIGHT TO MODIFY METALCRAFT TOOLS WITHOUT PRIOR NOTIFICATION.